

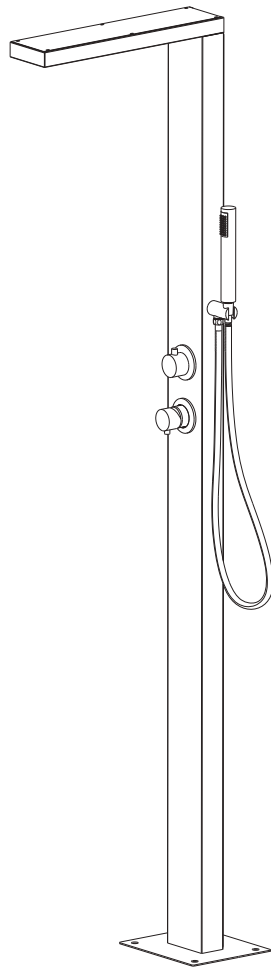
# USER MANUAL



Thank you for choosing Better Bathrooms.  
Please read this manual before installing your product  
and keep for future reference.

**better  
bathrooms**

## Outdoor shower Tower Brushed Steel BeBa\_28530/SUVAMB



Please note: Image is for illustrative purposes only and may differ slightly to the actual product

- **Multi person assembly**
- **Tools required**
- **We always recommend using professional**
- **tradespeople to install your product**

V3\_02.10.25

# Congratulations on your purchase

*And welcome to our growing gang of savvy shoppers*

We're on a mission to bring you extraordinary bathroom products, for less. From modern to traditional style ceramics, plus the gorgeous fixtures, fittings and furniture to match. So, you can fall in love with your space every single day.

As one of the UK's largest independent bathroom stores, we've received countless awards; including the National Business Awards UK, the Digital Entrepreneur Awards and being placed on The Sunday Times Fast Track 100.

We hope your new product goes above and beyond your expectations. However, should any problems occur, please:

- log in to your account and contact our customer services team via your self-serve portal – [betterbathrooms.com/CustomerAccount/Login](https://betterbathrooms.com/CustomerAccount/Login)
- contact us via [betterbathrooms.com/content/contact-us](https://betterbathrooms.com/content/contact-us)

## Important information

Please read these instructions thoroughly and retain for future reference

Minimum Working Pressure 1 bar

Maximum Working Pressure 3 bar

Pressure MUST be balanced

Hot supply MUST be connected to the left-hand inlet of the mixer

All installation work must be carried out to comply with:

The Water Supply (Water Fittings) Regulations and Water Supply (Water Fittings) (Scotland) Byelaws

The system must be thoroughly flushed prior to installation

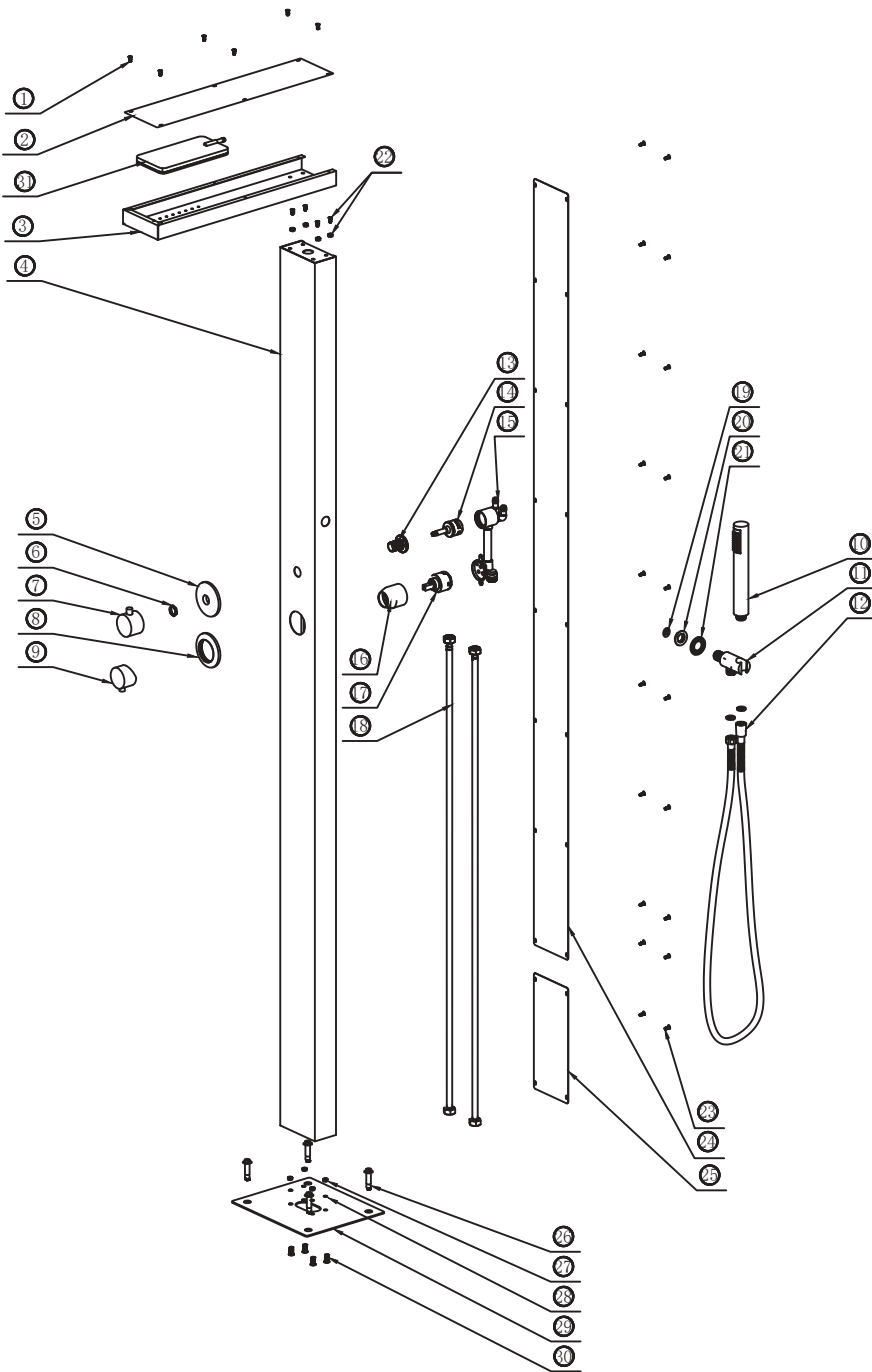
Product must be checked for damage prior to installation

Always check the installation area before drilling for pipes and cables

# Contents

- **Parts/ Diagrams-----4**
- **Tools required-----5**
- **Installation-----5**
- **Using-----10**
- **Troubleshooting-----10**
- **Cleaning-----11**

# Parts / Diagrams



1. Screws of overhead shower x 6
2. Overhead shower top cover
3. Overhead shower
4. Main body
5. Diverter plate
6. Nut
7. Diverter handle
8. Mixer plate
9. Mixer handle
10. Handshower
11. Handshower holder
12. Flexible hose
13. Diverter cover
14. Diverter
15. Mixer body
16. Mixer cover
17. Mechanical cartridge
18. Water-in hose x 2
19. Seal gasket
20. Nut
21. Gasket
22. Screws of overhead shower x 4
23. Screws of back cover x 20
24. Main body back cover 1
25. Main body back cover 2
26. Expansion screw x 4
27. Nut x 4
28. Gasket x 4
29. Base
30. Screw x 4
31. abs shower head

Please note that Parts are for illustrative purposes only and may differ slightly to the actual product

## Tools required

Spanner

Silicone

Drill and drill bit

Spirit Level

Pencil

Tape Measure

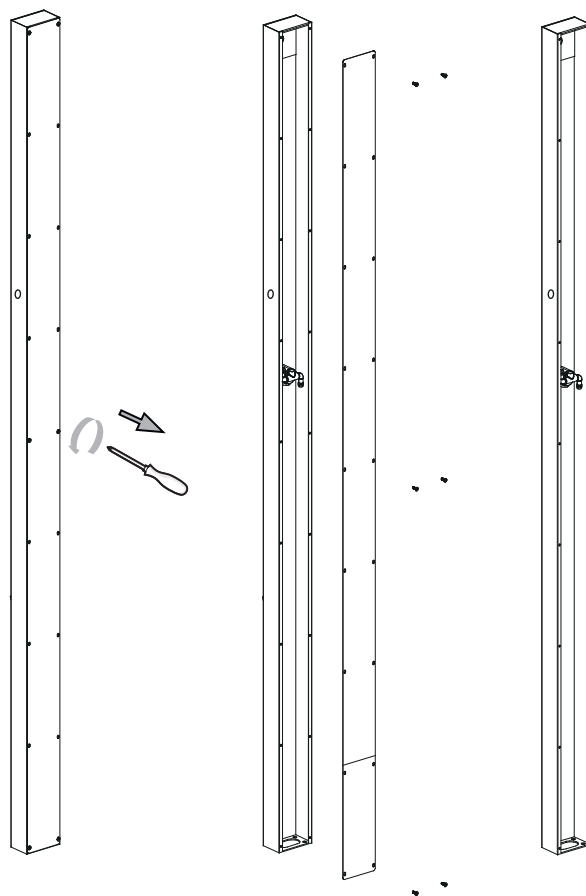
Hammer

Screwdriver

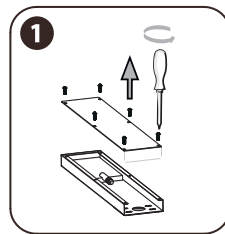
Socket

## Installation

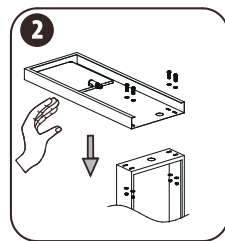
Use the screwdriver to unscrew the screws at the back of shower tower body and take out the back cover.



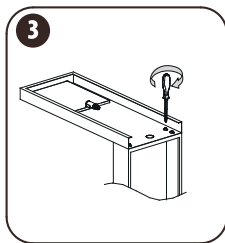
Use the screwdriver to unscrew the screws at the back of shower tower body and take out the back cover 1 and back cover 2.



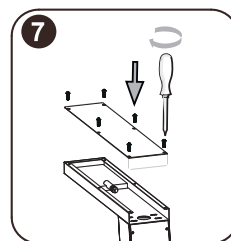
Use the screwdriver to unscrew the screws on overhead shower and take out the top cover.



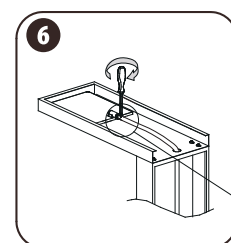
Fix the overhead shower onto shower tower body and tighten with the screws at one end by screwdriver.



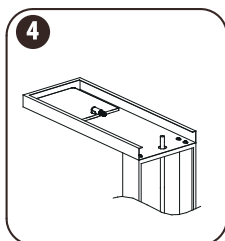
Pull out the pvc hose from the shower tower body and insert into the overhead shower.



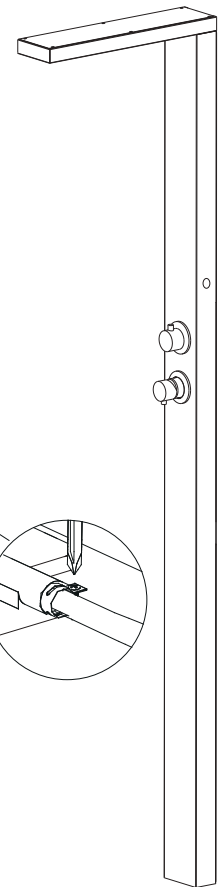
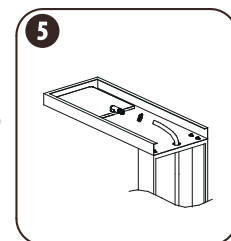
Take 1pc clamp and fix the pvc hose onto shower head.



Use the screwdriver to tighten the screw on the clamp.



Put back the top cover onto overhead shower and use the screwdriver to tighten the screws.



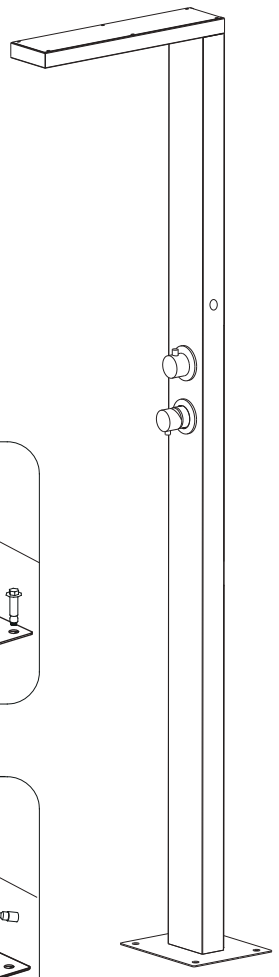
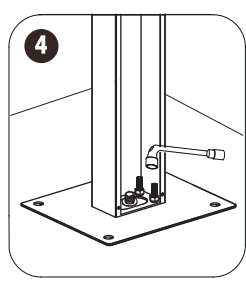
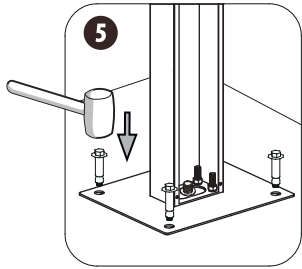
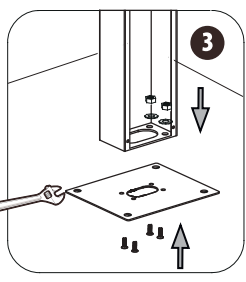
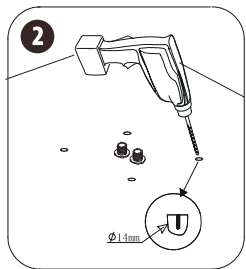
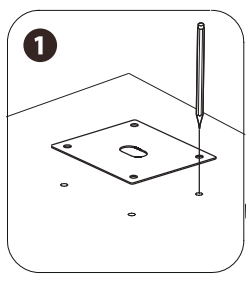
Put the base on the ground and use the pencil to mark the position.

Use the drill to drill the hole on the ground.

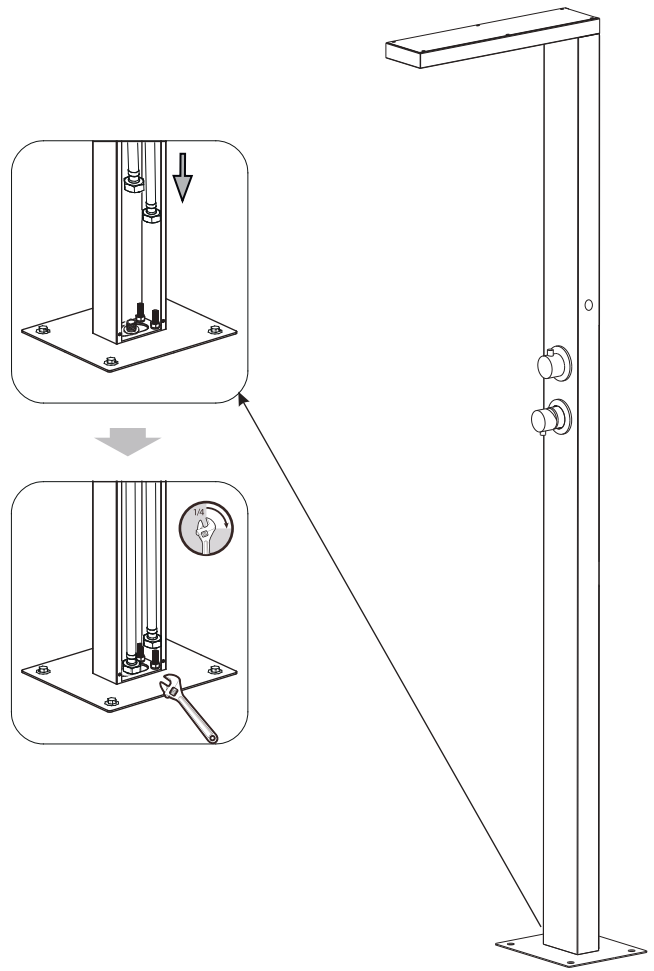
Insert the plugs into the hole with hammer.

Put the shower tower onto the base.

Tighten the nuts by socket.



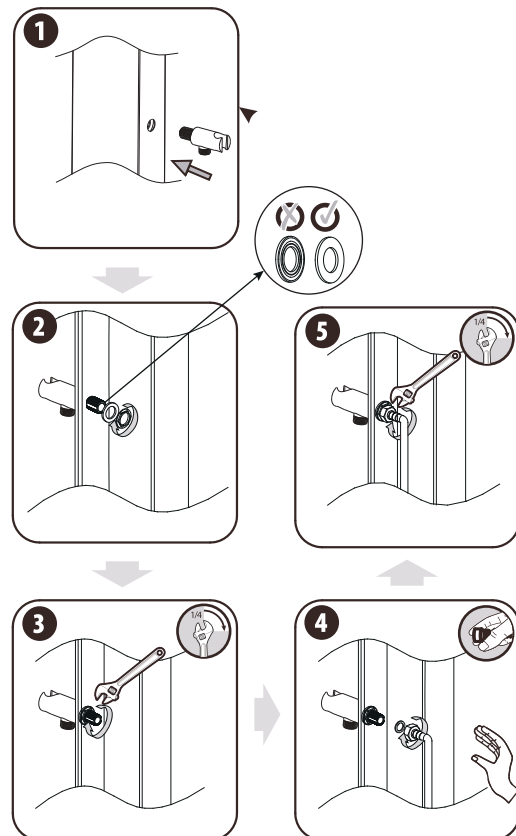
Connect the water-in hoses to the water supply and tighten with spanner.



Insert the handshower holder into the hole on the body.

Put the white gasket at inner side of the holder , fix the nut to the holder onto the body. Use the spanner to tighten.

Pull out the hose on the shower tower, fit the seal into the connector, then fix the connector onto the holder and tighten by spanner.

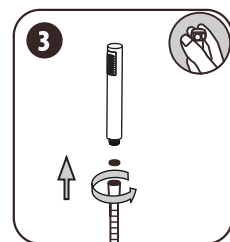
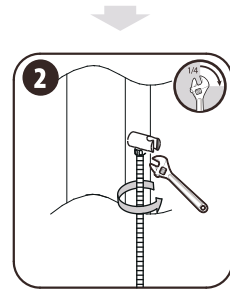
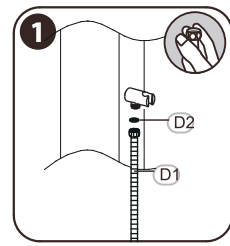




Fit the seal into the nut end of the shower hose and connect the nut to the outlet on the hand shower holder and tighten, if using a spanner, place a cloth around the nut to prevent damage.

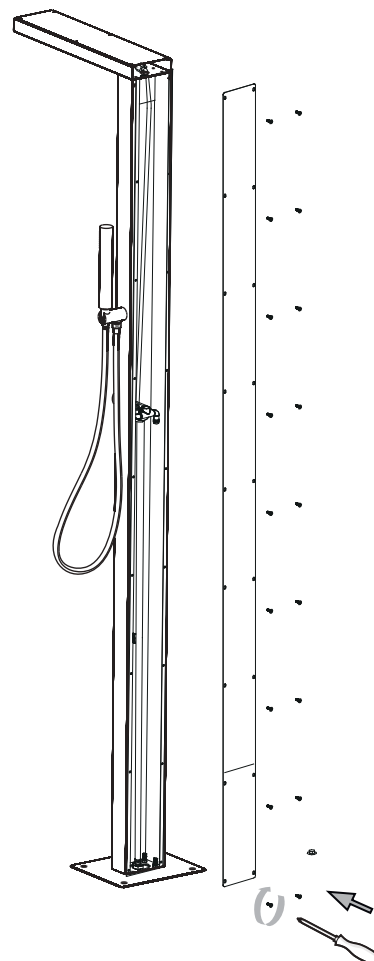
Place the second seal into the cone end of the shower hose and connect this to the hand shower and tighten.

Place the cone of the hose into the holder.



Turn on the water supply and check for leaks, if no problem, put back the back cover 1 and back cover 2 onto the body and tighten the screws.

Installation is then complete.



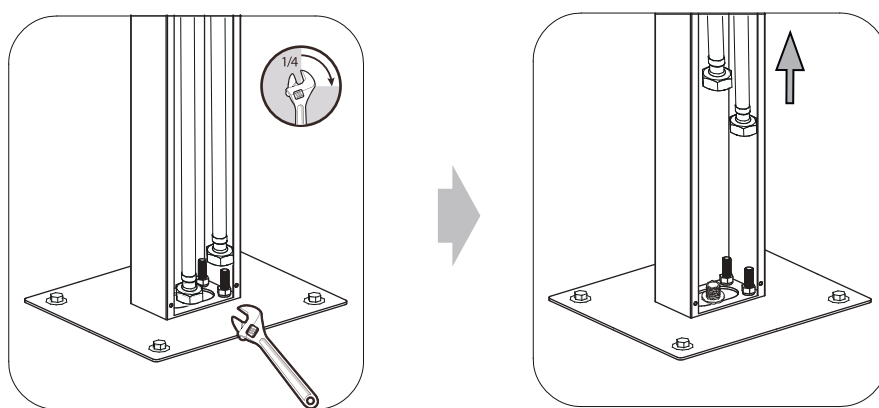
# Using

To control the temperature, turn the temperature control handle until the desired temperature is reached.

As part of the installation, isolation valves must be fitted to the supply and pipes insulated against frost.

During cold periods of weather, to prevent the cartridge freezing and cracking, turn the shower on and close the isolation valves allowing the mixer to drain down fully.

Remove the cartridge, this will prevent water freezing inside the mixer/cartridge causing expansion, leading to the cartridge cracking and in turn leaking.



# Troubleshooting

## Water dripping after being turned off

1. Does the water stop dripping after a period of time, if so this is normal as the water within the unit needs to drain away, so some dripping may occur
2. Does the dripping continue, if so the flow control valve for the function that is dripping, will need to be replaced.

# Cleaning

To maintain the surface of your product, wipe with a clean damp cloth and wipe dry, do not use any abrasive cleaning agents or materials .

It is recommended to wipe and dry on a regular basis.

## ***For more information***

- visit [betterbathrooms.com](http://betterbathrooms.com)
- email [customerservices@buyitdirect.co.uk](mailto:customerservices@buyitdirect.co.uk)
- call 0330 390 3062
- write to Trident Business Park, Neptune Way, Huddersfield, HD2 1UA

**better**   
**bathrooms**

Part of the BuyItDirect Group